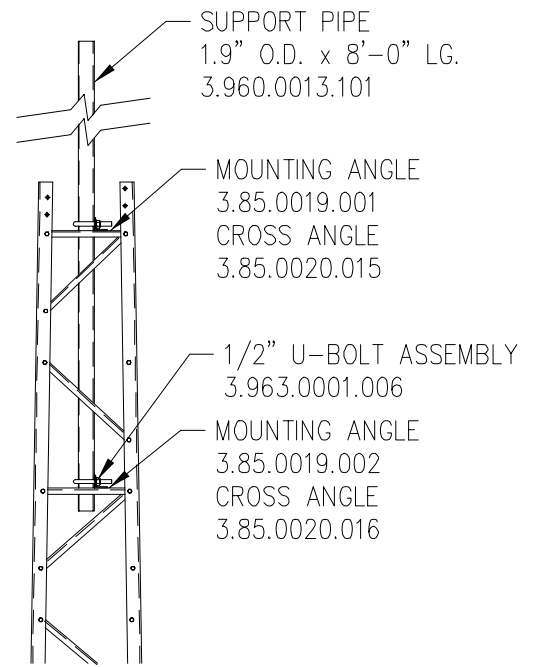


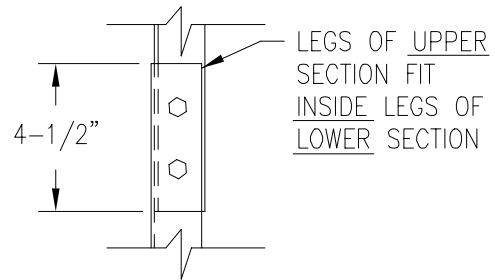
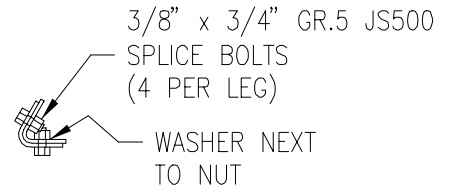
**SECTION #2**

KNOCK-DOWN P/N: 4.94.0021.000  
 PRE-ASSEMBLED P/N: 4.95.0021.000



**TOP SECTION #2**

KNOCK-DOWN P/N: 4.94.0022.000  
 PRE-ASSEMBLED P/N: 4.95.0022.000  
 (INCLUDES ALL PARTS SHOWN IN SECTION #2)



**SECTION SPLICE**

COPYRIGHT HEREIN IS THE PROPERTY OF TRYLON MANUFACTURING COMPANY LTD. ALL DUPLICATION, RECORDING, DISCLOSURE OR USE IS PROHIBITED WITHOUT WRITTEN CONSENT OF TRYLON MANUFACTURING COMPANY LTD.

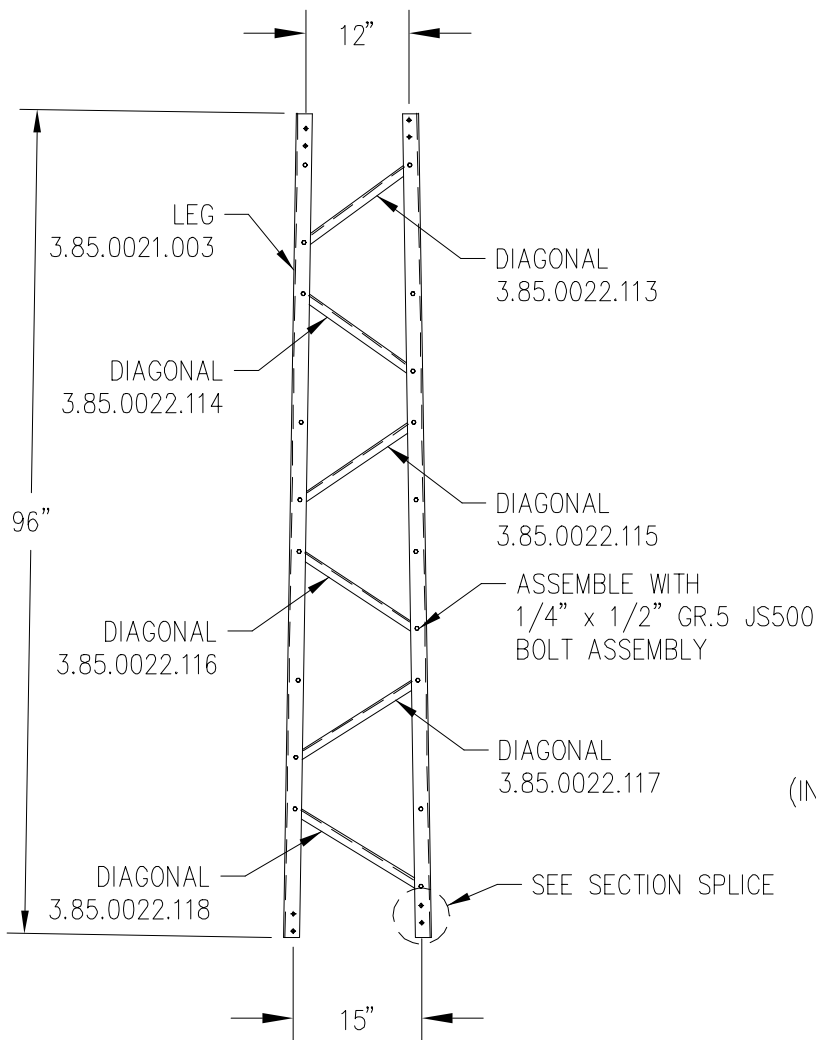
REV.	REV. BY:	CHK. BY:	DESCRIPTION	DATE

**NOTES:**

- 1) ALL BRACING MEMBERS INSIDE LEGS WITH FLANGE FACING TOP END.

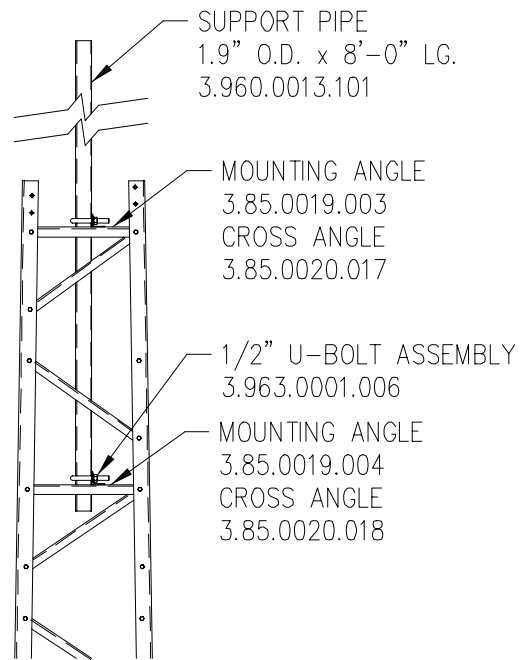


CUSTOMER:	SITE:	SCALE:	15.000
DATE: 26 JAN 00	BY: BCP	CHK:	APP:
TITLE: ASSEMBLY OF SECTION #2			DRAWING NO. 000001.610.0002



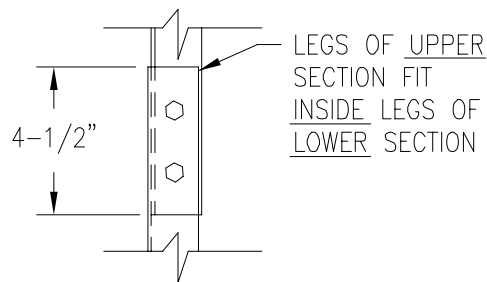
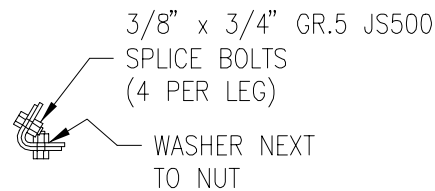
SECTION #3

KNOCK-DOWN P/N: 4.94.0031.000  
 PRE-ASSEMBLED P/N: 4.95.0031.000



TOP SECTION #3

KNOCK-DOWN P/N: 4.94.0032.000  
 PRE-ASSEMBLED P/N: 4.95.0032.000  
 (INCLUDES ALL PARTS SHOWN IN SECTION #3)



SECTION SPLICE

COPYRIGHT HEREIN IS THE PROPERTY OF TRYLON MANUFACTURING COMPANY LTD. ALL DUPLICATION, RECORDING, DISCLOSURE OR USE IS PROHIBITED WITHOUT WRITTEN CONSENT OF TRYLON MANUFACTURING COMPANY LTD.

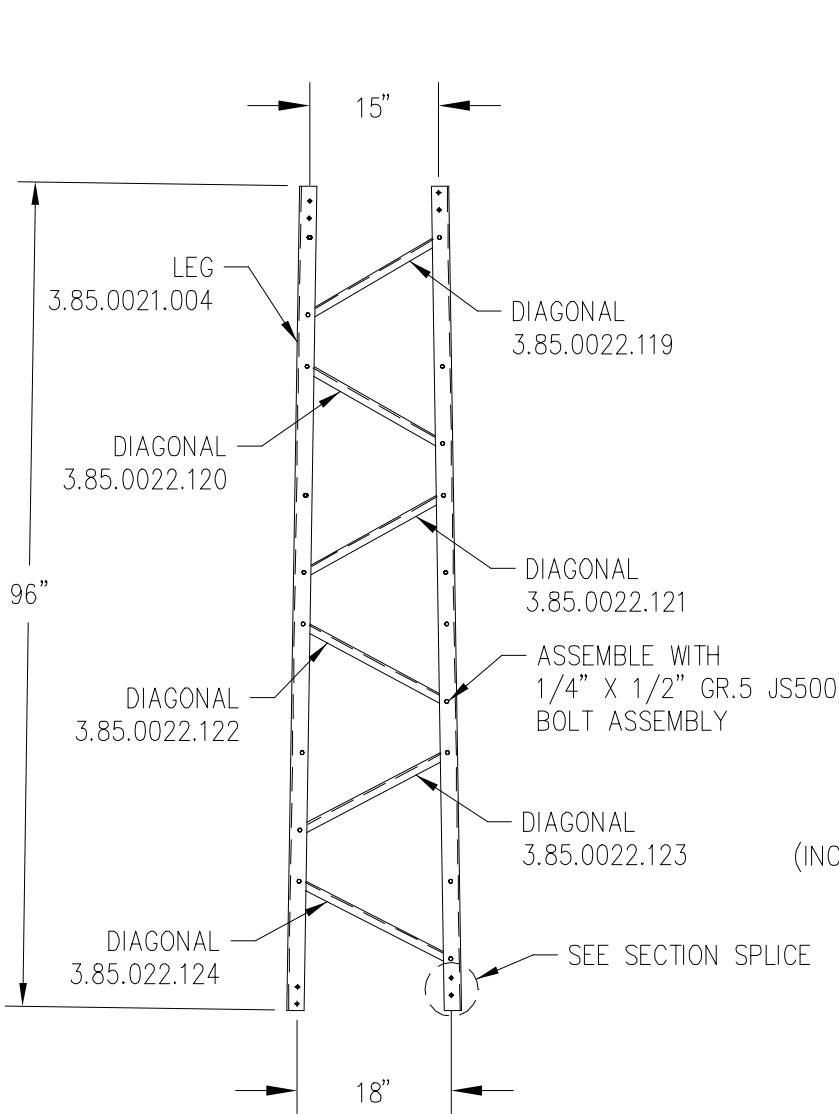
REV.	REV. BY:	CHK. BY:	DESCRIPTION	DATE

NOTES:

- 1) ALL BRACING MEMBERS INSIDE LEGS WITH FLANGE FACING TOP END.

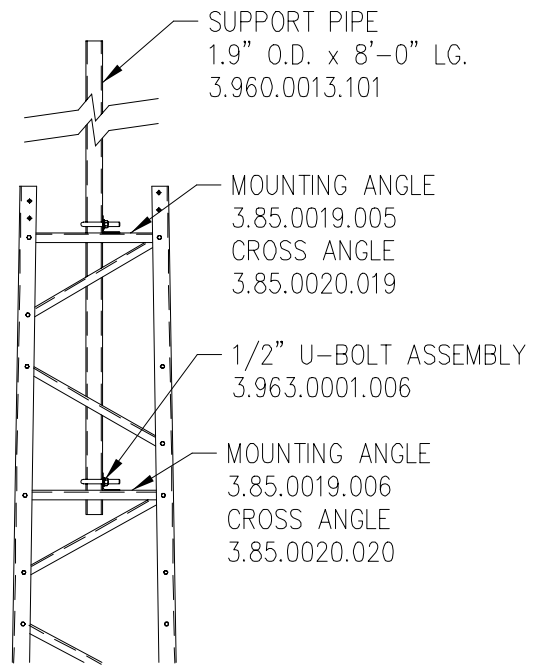


CUSTOMER:	SITE:	SCALE:	15.000
DATE: 26 JAN 00	BY: BCP	CHK:	APP:
TITLE: ASSEMBLY OF SECTION #3			DRAWING NO. 000001.610.0003



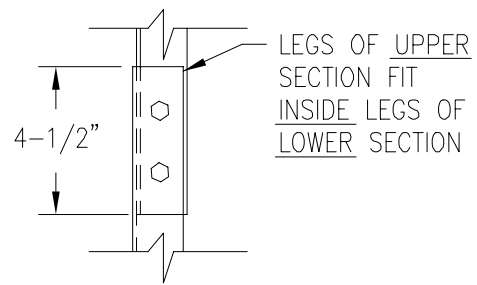
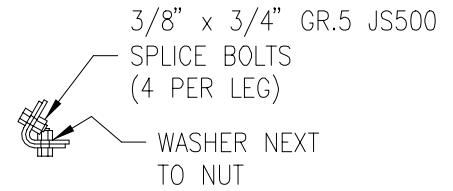
SECTION #4

KNOCK-DOWN P/N: 4.94.0041.000  
 PRE-ASSEMBLED P/N: 4.95.0041.000



TOP SECTION #4

KNOCK-DOWN P/N: 4.94.0042.000  
 PRE-ASSEMBLED P/N: 4.95.0042.000  
 (INCLUDES ALL PARTS SHOWN IN SECTION #4)



SECTION SPLICE

COPYRIGHT HEREIN IS THE PROPERTY OF TRYLON MANUFACTURING COMPANY LTD. ALL DUPLICATION, RECORDING, DISCLOSURE OR USE IS PROHIBITED WITHOUT WRITTEN CONSENT OF TRYLON MANUFACTURING COMPANY LTD.

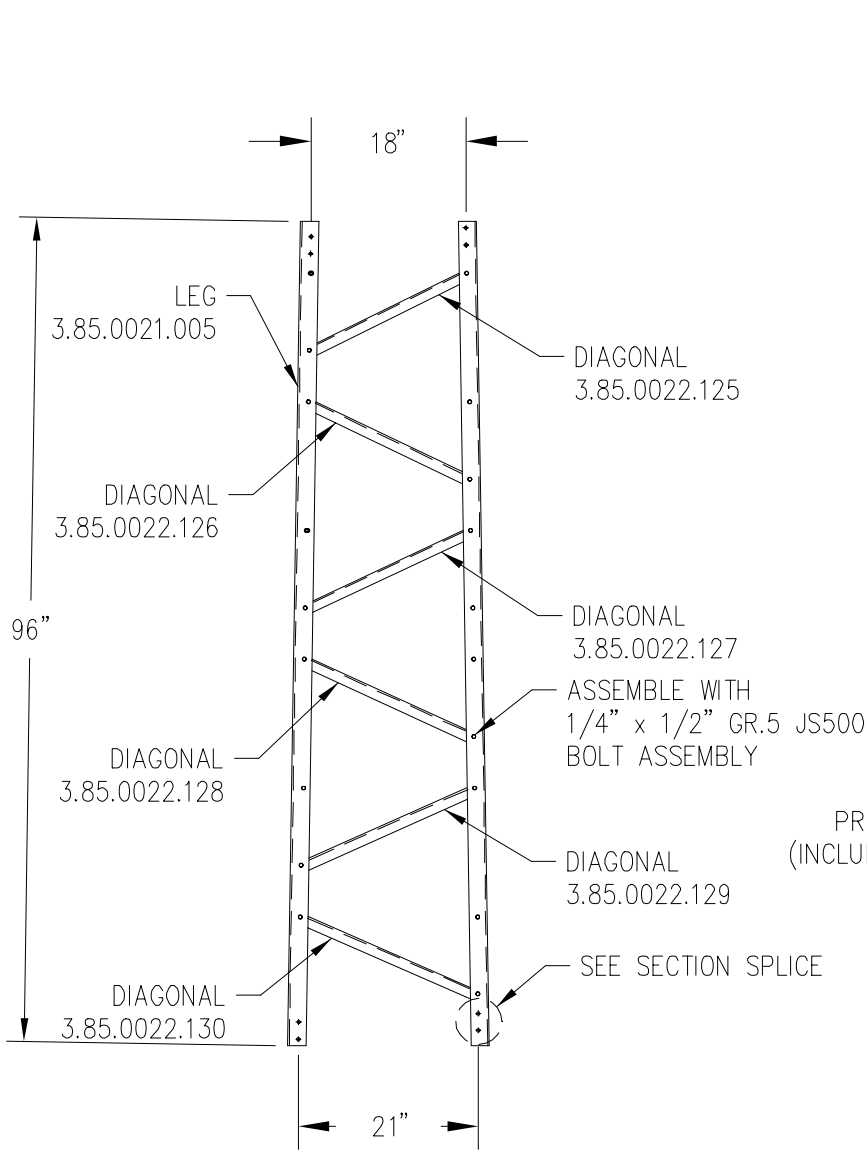
REV.	REV. BY:	CHK. BY:	DESCRIPTION	DATE

NOTES:

- 1) ALL BRACING MEMBERS INSIDE LEGS WITH FLANGE FACING TOP END.

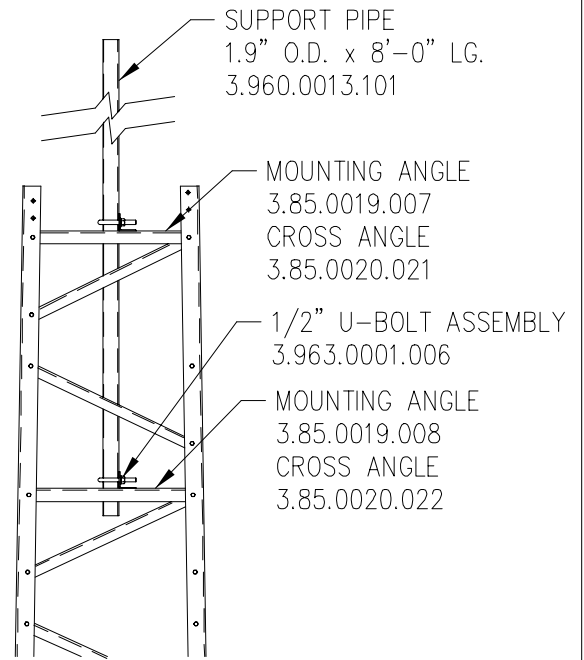


CUSTOMER:	SITE:	SCALE:	15.000
DATE: 26 JAN 00	BY: BCP	CHK:	APP:
TITLE: ASSEMBLY OF SECTION #4			DRAWING NO. 000001.610.0004



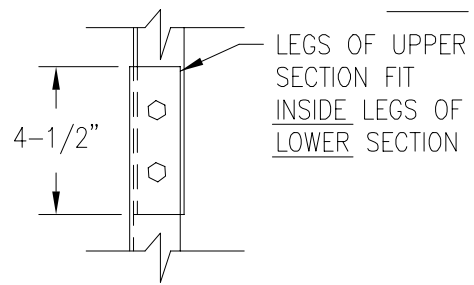
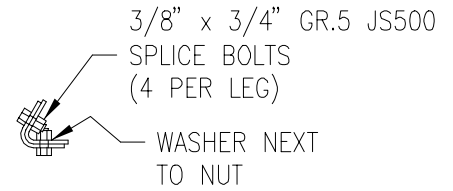
**SECTION #5**

KNOCK-DOWN P/N: 4.94.0051.000  
 PRE-ASSEMBLED P/N: 4.95.0051.000



**TOP SECTION #5**

KNOCK-DOWN P/N: 4.94.0052.000  
 PRE-ASSEMBLED P/N: 4.95.0052.000  
 (INCLUDES ALL PARTS SHOWN IN SECTION #5)



**SECTION SPLICE**

COPYRIGHT HEREIN IS THE PROPERTY OF TRYLON MANUFACTURING COMPANY LTD. ALL DUPLICATION, RECORDING, DISCLOSURE OR USE IS PROHIBITED WITHOUT WRITTEN CONSENT OF TRYLON MANUFACTURING COMPANY LTD.

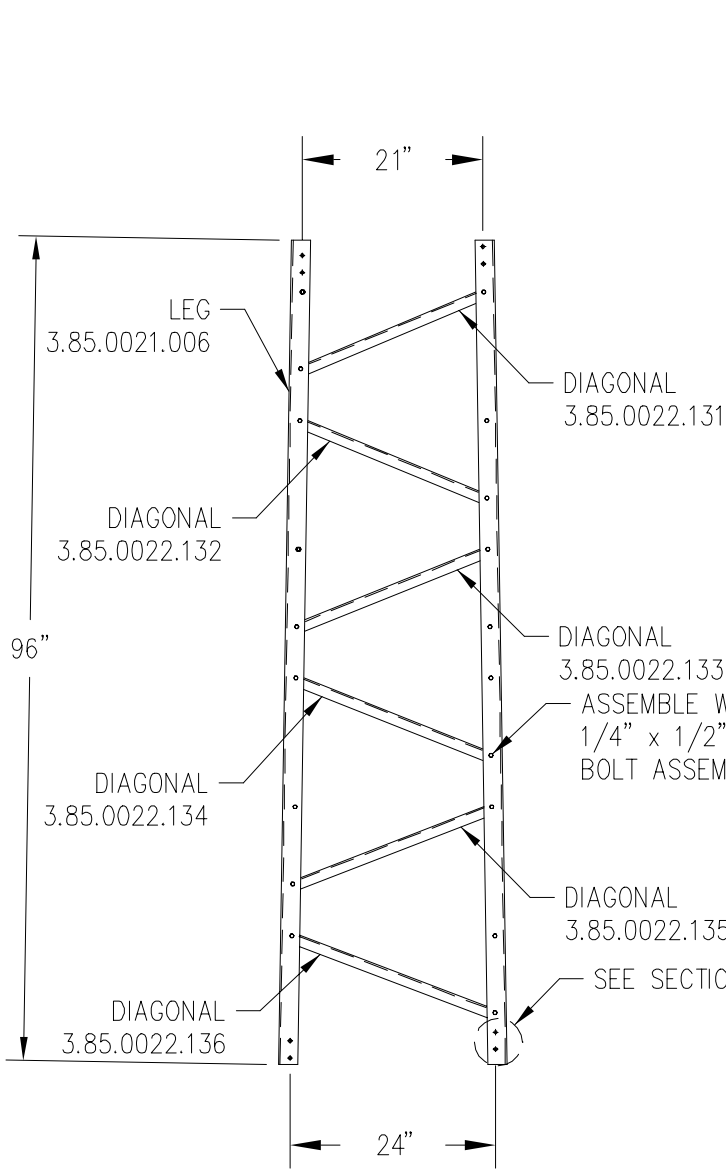
REV.	REV. BY:	CHK. BY:	DESCRIPTION	DATE

**NOTES:**

- 1) ALL BRACING MEMBERS INSIDE LEGS WITH FLANGE FACING TOP END.

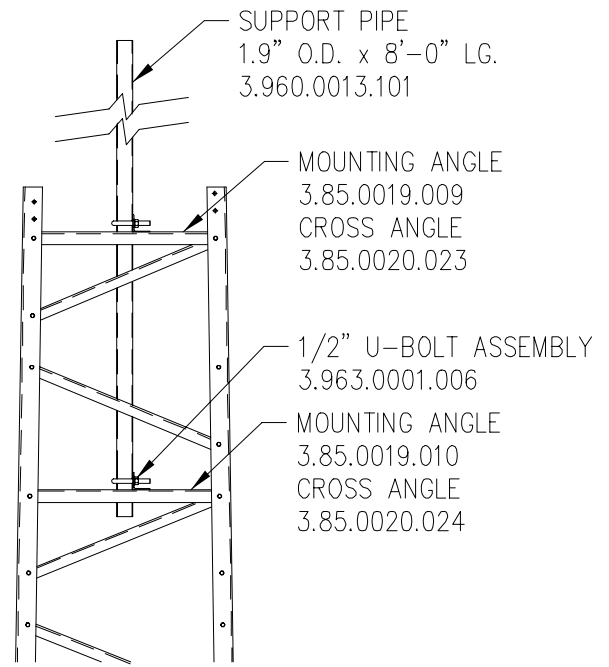


CUSTOMER:	SITE:	SCALE:	15.000
DATE: 26 JAN 00	BY: BCP	CHK:	APP:
TITLE: ASSEMBLY OF SECTION #5			DRAWING NO. 000001.610.0005



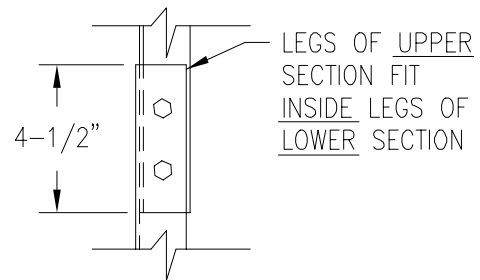
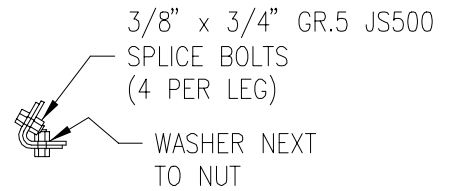
SECTION #6

KNOCK-DOWN P/N: 4.94.0061.000  
 PRE-ASSEMBLED P/N: 4.95.0061.000



TOP SECTION #6

KNOCK-DOWN P/N: 4.94.0062.000  
 PRE-ASSEMBLED P/N: 4.95.0062.000  
 (INCLUDES ALL PARTS SHOWN IN SECTION #6)



SECTION SPLICE

COPYRIGHT HEREIN IS THE PROPERTY OF TRYLON MANUFACTURING COMPANY LTD. ALL DUPLICATION, RECORDING, DISCLOSURE OR USE IS PROHIBITED WITHOUT WRITTEN CONSENT OF TRYLON MANUFACTURING COMPANY LTD.

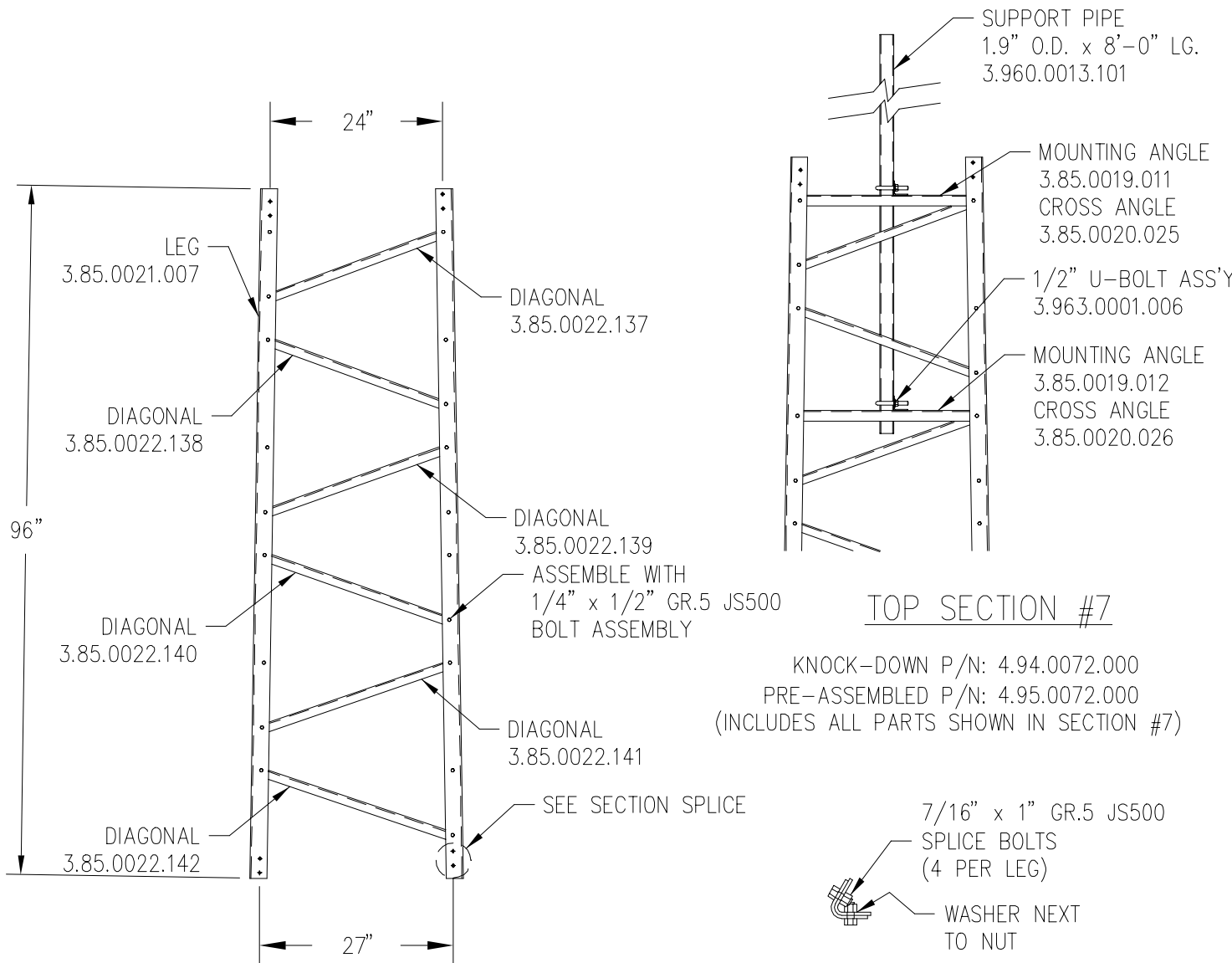
REV.	REV. BY:	CHK. BY:	DESCRIPTION	DATE

NOTES:

- 1) ALL BRACING MEMBERS INSIDE LEGS WITH FLANGE FACING TOP END.



CUSTOMER:	SITE:	SCALE:	15.000
DATE: 26 JAN 00	BY: BCP	CHK:	APP:
TITLE: ASSEMBLY OF SECTION #6			DRAWING NO. 000001.610.0006

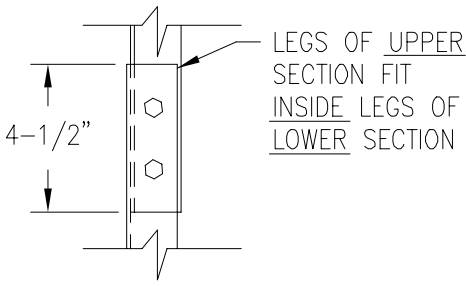
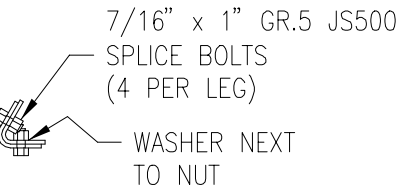


SECTION #7

KNOCK-DOWN P/N: 4.94.0071.000  
 PRE-ASSEMBLED P/N: 4.95.0071.000

TOP SECTION #7

KNOCK-DOWN P/N: 4.94.0072.000  
 PRE-ASSEMBLED P/N: 4.95.0072.000  
 (INCLUDES ALL PARTS SHOWN IN SECTION #7)



SECTION SPLICE

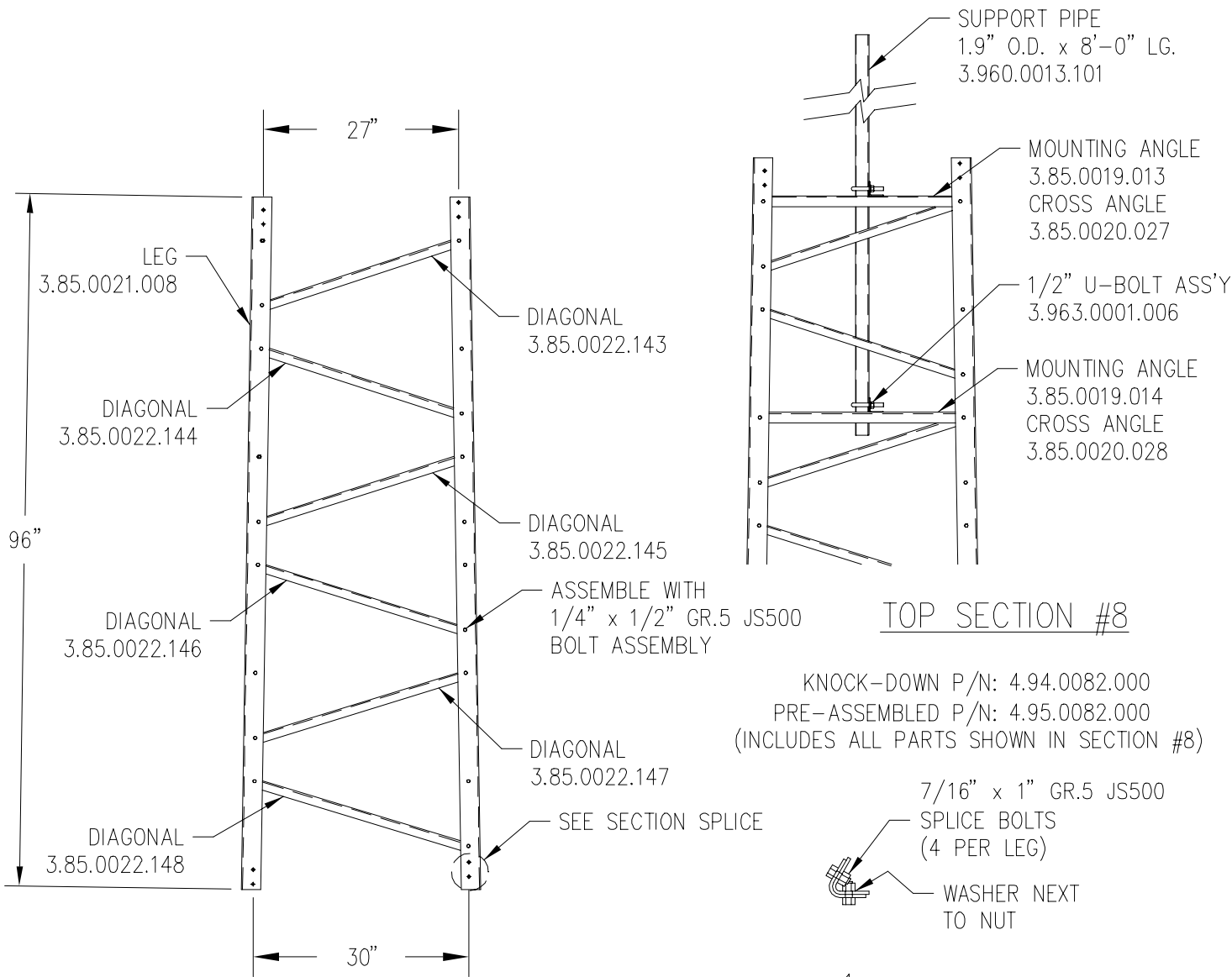
COPYRIGHT HEREIN IS THE PROPERTY OF TRYLON MANUFACTURING COMPANY LTD. ALL DUPLICATION, RECORDING, DISCLOSURE OR USE IS PROHIBITED WITHOUT WRITTEN CONSENT OF TRYLON MANUFACTURING COMPANY LTD.

REV.	REV. BY:	CHK. BY:	DESCRIPTION	DATE

NOTES:  
 1) ALL BRACING MEMBERS INSIDE LEGS WITH FLANGE FACING TOP END.



CUSTOMER:	SITE:	SCALE: 15.000
DATE: 26 JAN 00	BY: BCP	CHK: APP:
TITLE: ASSEMBLY OF SECTION #7		DRAWING NO. 000001.610.0007



TOP SECTION #8

KNOCK-DOWN P/N: 4.94.0082.000  
 PRE-ASSEMBLED P/N: 4.95.0082.000  
 (INCLUDES ALL PARTS SHOWN IN SECTION #8)

SECTION #8

KNOCK-DOWN P/N: 4.94.0081.000  
 PRE-ASSEMBLED P/N: 4.95.0081.000

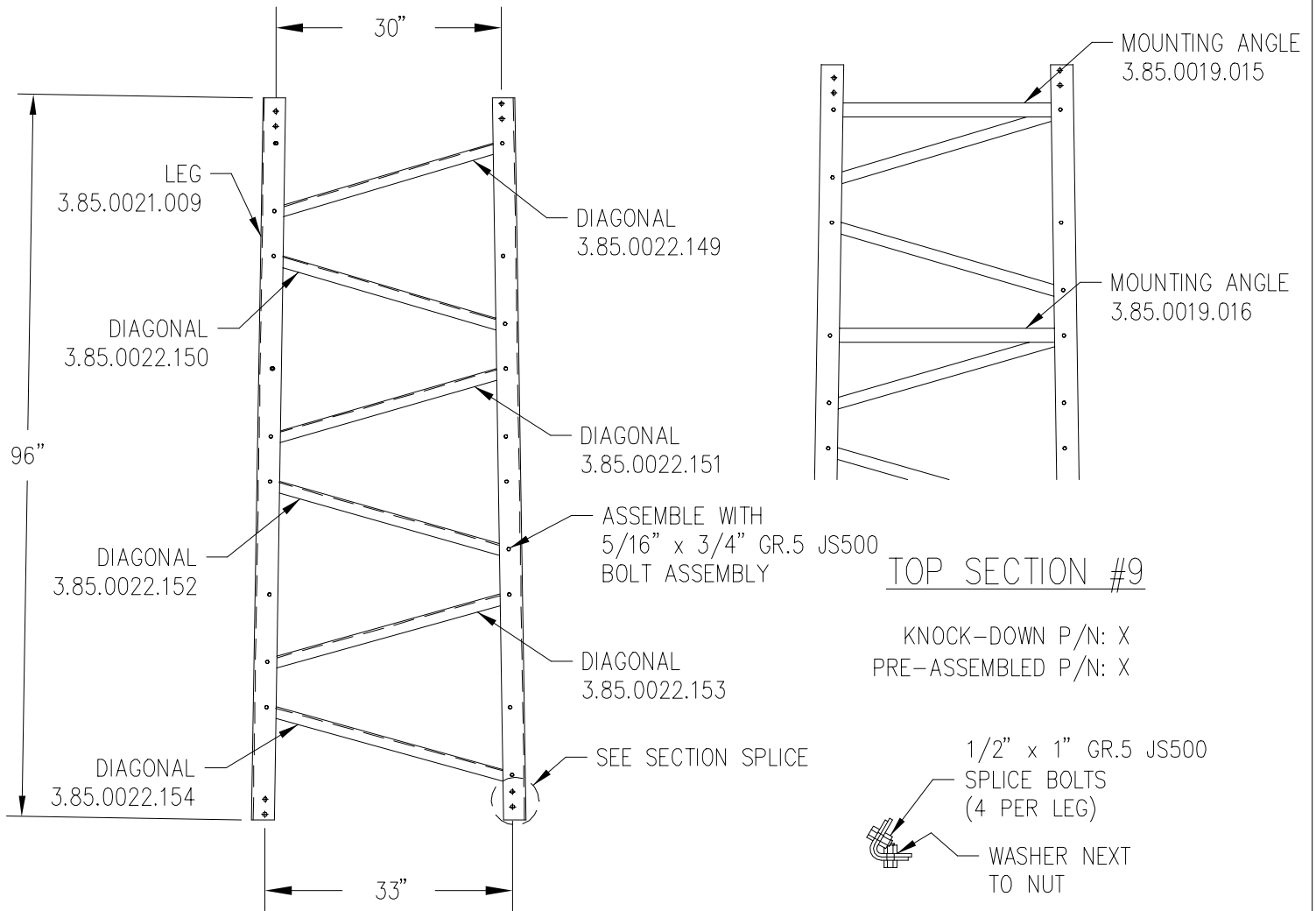
SECTION SPLICE

COPYRIGHT HEREIN IS THE PROPERTY OF TRYLON MANUFACTURING COMPANY LTD. ALL DUPLICATION, RECORDING, DISCLOSURE OR USE IS PROHIBITED WITHOUT WRITTEN CONSENT OF TRYLON MANUFACTURING COMPANY LTD.				
REV.	REV. BY:	CHK. BY:	DESCRIPTION	DATE

NOTES:  
 1) ALL BRACING MEMBERS INSIDE LEGS WITH FLANGE FACING TOP END.



CUSTOMER:	SITE:	SCALE: 15.000
DATE: 26 JAN 00	BY: BCP	CHK:
TITLE: ASSEMBLY OF SECTION #8		DRAWING NO. 000001.610.0008

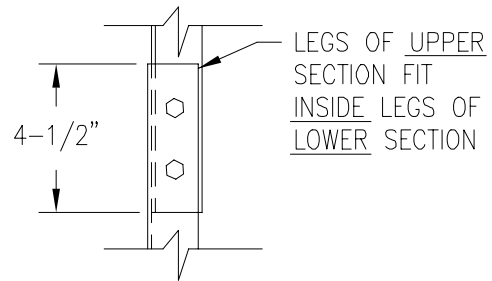
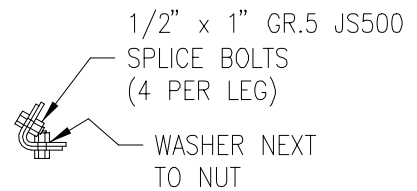


SECTION #9

KNOCK-DOWN P/N: 4.94.0091.000  
 PRE-ASSEMBLED P/N: 4.95.0091.000

TOP SECTION #9

KNOCK-DOWN P/N: X  
 PRE-ASSEMBLED P/N: X



SECTION SPLICE

COPYRIGHT HEREIN IS THE PROPERTY OF TRYLON MANUFACTURING COMPANY LTD. ALL DUPLICATION, RECORDING, DISCLOSURE OR USE IS PROHIBITED WITHOUT WRITTEN CONSENT OF TRYLON MANUFACTURING COMPANY LTD.

REV.	REV. BY:	CHK. BY:	DESCRIPTION	DATE

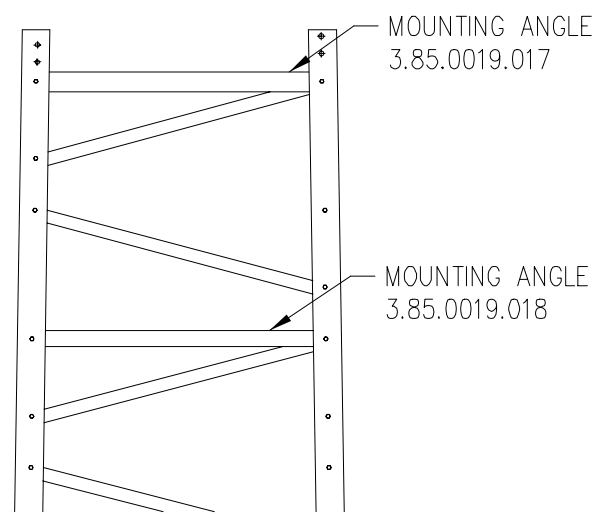
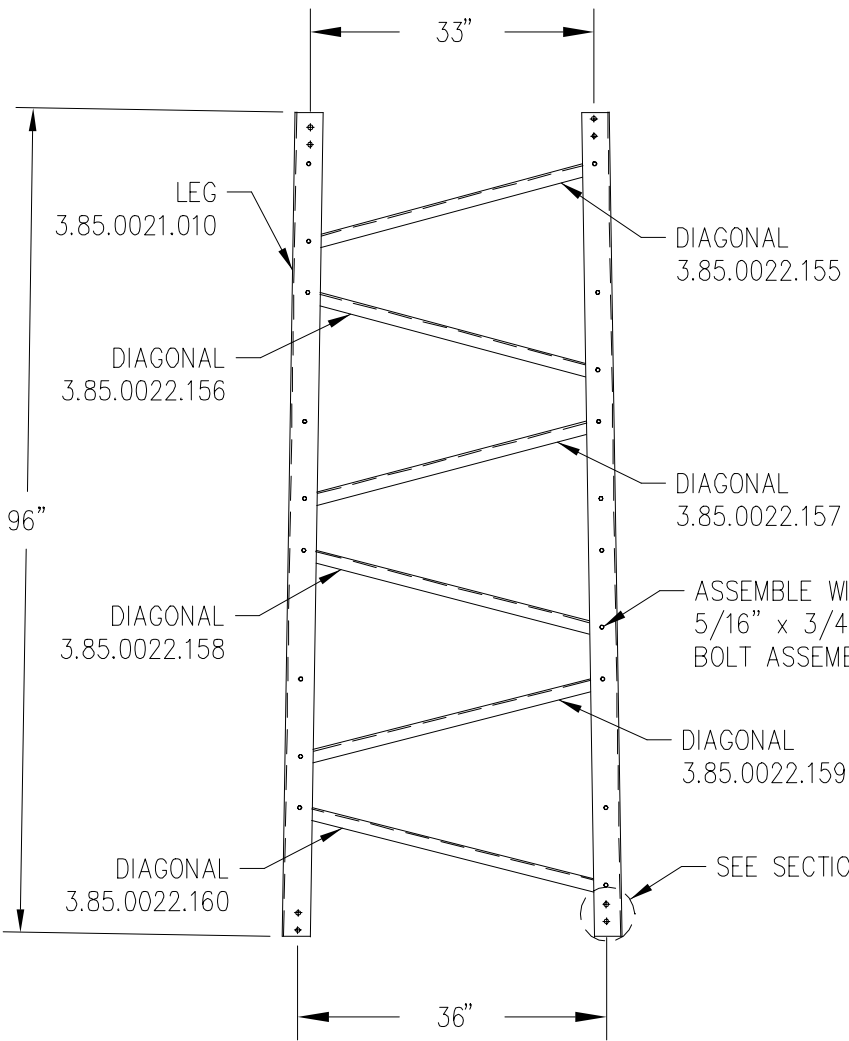
NOTES:

- 1) ALL BRACING MEMBERS INSIDE LEGS WITH FLANGE FACING TOP END.



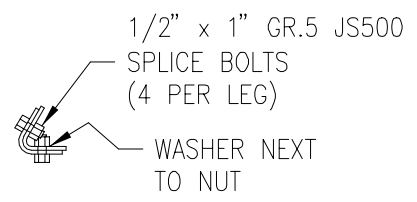
CUSTOMER:	SITE:	SCALE:	15.000
DATE: 26 JAN 00	BY: BCP	CHK:	APP:
TITLE: ASSEMBLY OF SECTION #9			DRAWING NO. 000001.610.0009





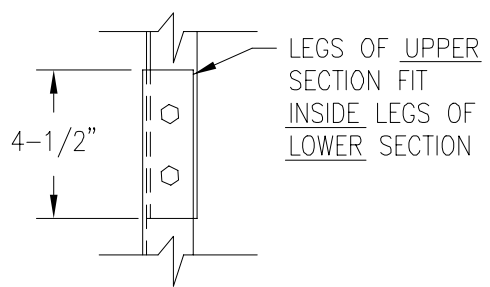
**TOP SECTION #10**

KNOCK-DOWN P/N: X  
 PRE-ASSEMBLED P/N: X



**SECTION #10**

KNOCK-DOWN P/N: 4.94.0101.000  
 PRE-ASSEMBLED P/N: 4.95.0101.000



**SECTION SPLICE**

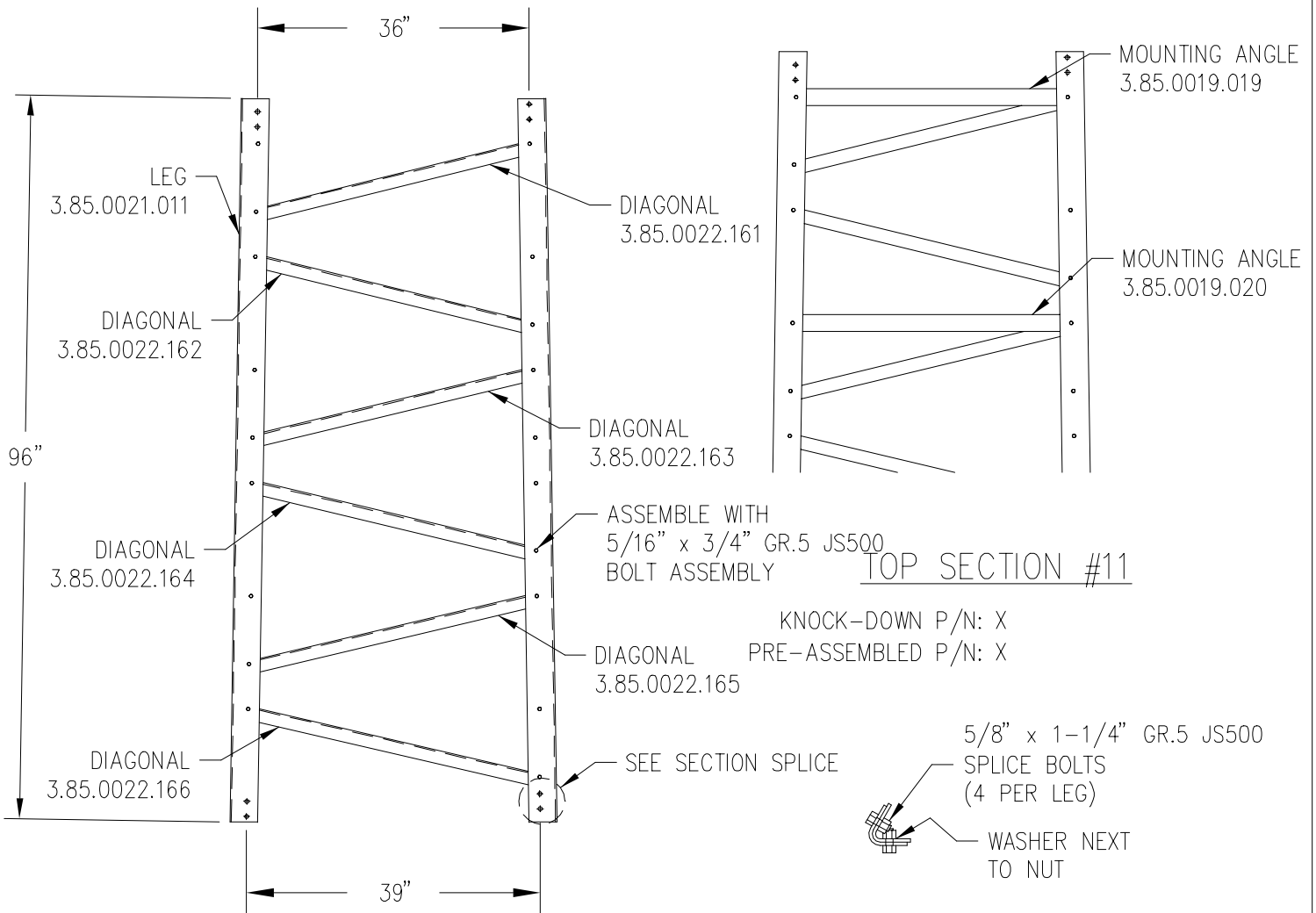
COPYRIGHT HEREIN IS THE PROPERTY OF TRYLON MANUFACTURING COMPANY LTD. ALL DUPLICATION, RECORDING, DISCLOSURE OR USE IS PROHIBITED WITHOUT WRITTEN CONSENT OF TRYLON MANUFACTURING COMPANY LTD.

REV.	REV. BY:	CHK. BY:	DESCRIPTION	DATE

NOTES:  
 1) ALL BRACING MEMBERS INSIDE LEGS WITH FLANGE FACING TOP END.

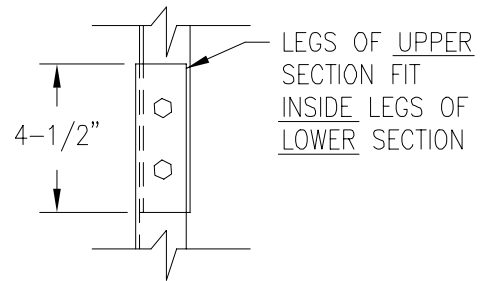


CUSTOMER:	SITE:	SCALE:	15.000
DATE: 26 JAN 00	BY: BCP	CHK:	APP:
TITLE: ASSEMBLY OF SECTION #10			DRAWING NO. 000001.610.0010



SECTION #11

KNOCK-DOWN P/N: 4.94.0111.000  
 PRE-ASSEMBLED P/N: 4.95.0111.000



SECTION SPLICE

COPYRIGHT HEREIN IS THE PROPERTY OF TRYLON MANUFACTURING COMPANY LTD. ALL DUPLICATION, RECORDING, DISCLOSURE OR USE IS PROHIBITED WITHOUT WRITTEN CONSENT OF TRYLON MANUFACTURING COMPANY LTD.

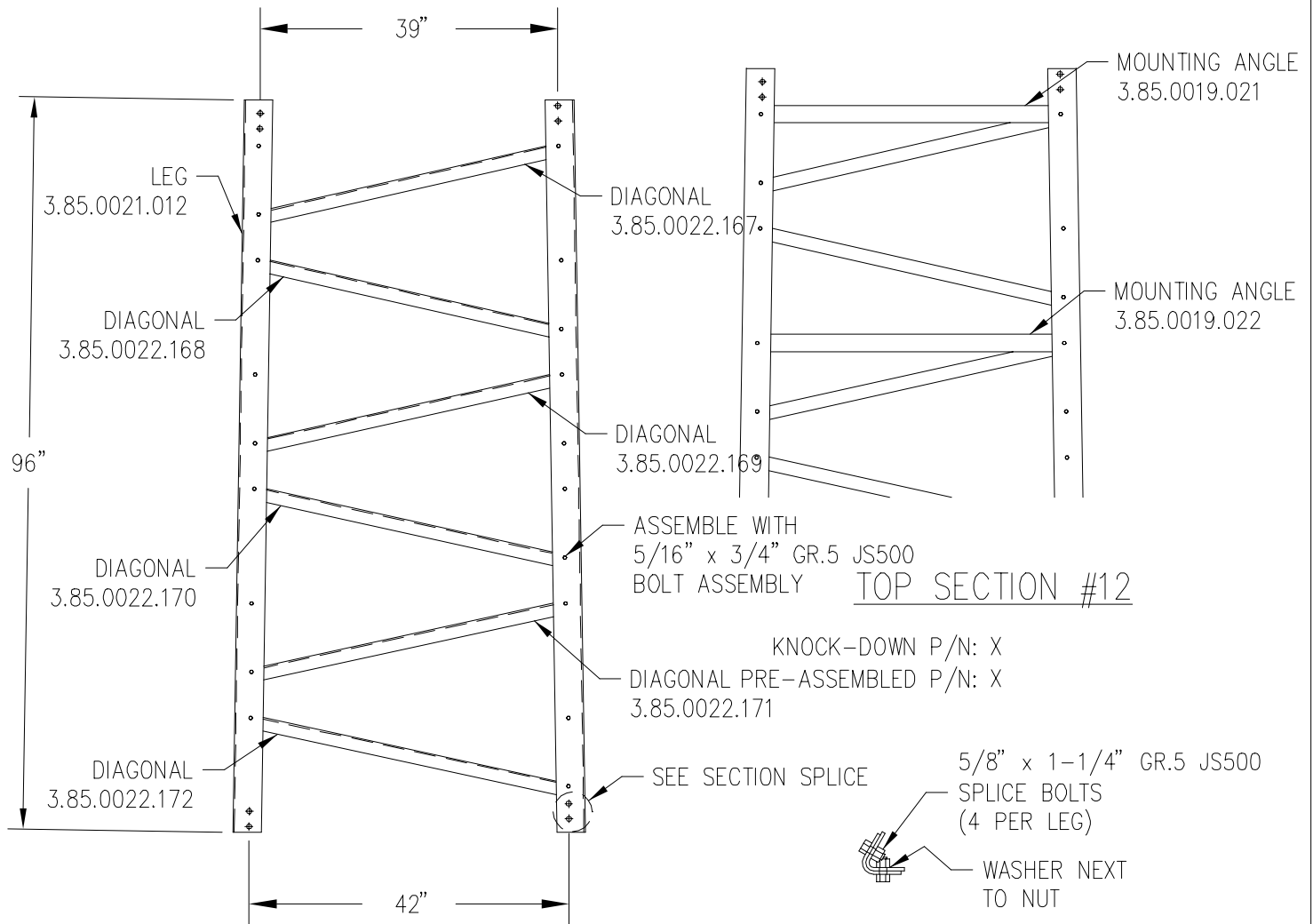
REV.	REV. BY:	CHK. BY:	DESCRIPTION	DATE

NOTES:

- 1) ALL BRACING MEMBERS INSIDE LEGS WITH FLANGE FACING TOP END.

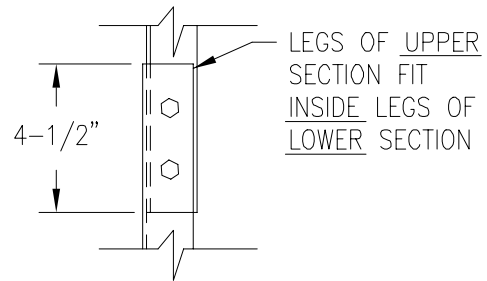


CUSTOMER:		SITE:		SCALE: 15.000	
DATE: 26 JAN 00	BY: BCP	CHK:	APP:	DRAWING NO. 000001.610.0011	
TITLE: ASSEMBLY OF SECTION #11				DRAWING NO. 000001.610.0011	



SECTION #12

KNOCK-DOWN P/N: 4.94.0121.000  
 PRE-ASSEMBLED P/N: 4.95.0121.000



SECTION SPLICE

COPYRIGHT HEREIN IS THE PROPERTY OF TRYLON MANUFACTURING COMPANY LTD. ALL DUPLICATION, RECORDING, DISCLOSURE OR USE IS PROHIBITED WITHOUT WRITTEN CONSENT OF TRYLON MANUFACTURING COMPANY LTD.

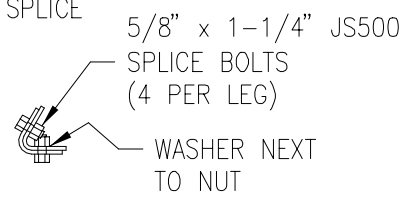
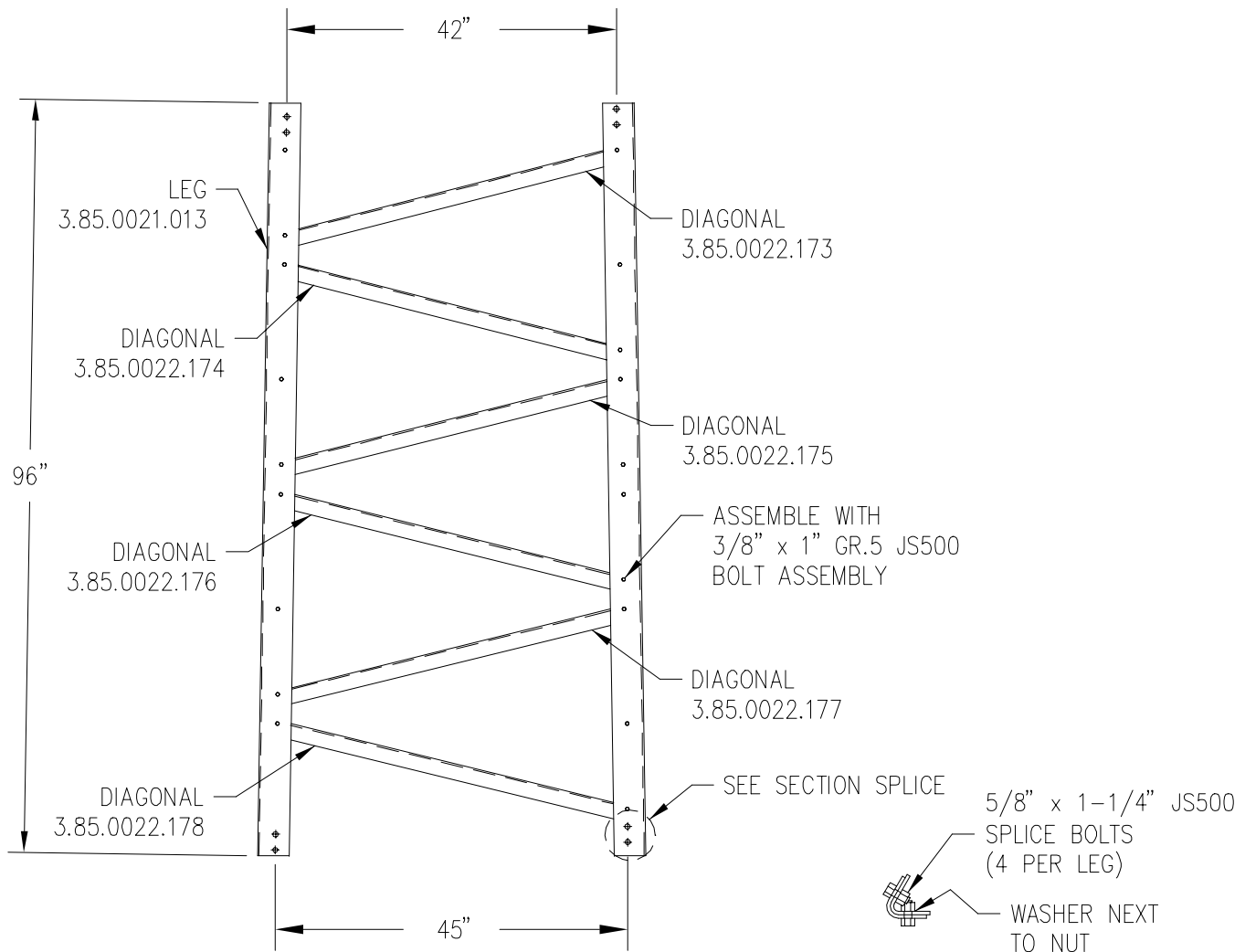
REV.	REV. BY:	CHK. BY:	DESCRIPTION	DATE

NOTES:

- 1) ALL BRACING MEMBERS INSIDE LEGS WITH FLANGE FACING TOP END.

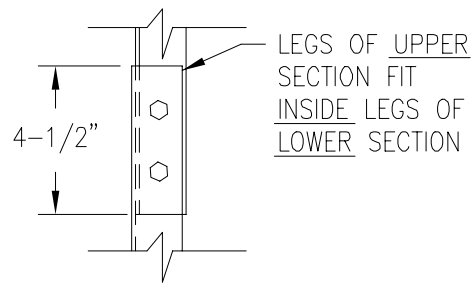


CUSTOMER:		SITE:		SCALE: 15.000	
DATE: 26 JAN 00	BY: BCP	CHK:	APP:		
TITLE: ASSEMBLY OF SECTION #12				DRAWING NO. 000001.610.0012	



**SECTION #13**

KNOCK-DOWN P/N: 4.94.0131.000  
 PRE-ASSEMBLED P/N: 4.95.0131.000



**SECTION SPLICE**

COPYRIGHT HEREIN IS THE PROPERTY OF TRYLON MANUFACTURING COMPANY LTD. ALL DUPLICATION, RECORDING, DISCLOSURE OR USE IS PROHIBITED WITHOUT WRITTEN CONSENT OF TRYLON MANUFACTURING COMPANY LTD.

REV.	REV. BY:	CHK. BY:	DESCRIPTION	DATE

**NOTES:**

- 1) ALL BRACING MEMBERS INSIDE LEGS WITH FLANGE FACING TOP END.



CUSTOMER:	SITE:	SCALE:	15.000
DATE: 26 JAN 00	BY: BCP	CHK:	APP:
TITLE: ASSEMBLY OF SECTION #13			DRAWING NO. 000001.610.0013