

HF, VHF, Satellite Antenna Rotators

# Rotators



Exclusive G-2800DXA  
planetary gear system



# More Yaesu rotators

For the largest rotator selection made by the only major radio manufacturer in the world, just ask for Yaesu!

There is a Yaesu rotator for every aspect of communications. Amateur radio operators find Yaesu rotators indispensable for making difficult contacts possible. For government use, such as

emergency fleet dispatch, or military maneuvers Yaesu rotators aid remote communications of all types. Radio and television stations use reliable Yaesu rotators for off-site broadcast activities. Because Yaesu rotators are reasonably priced, they find their lower system costs are a bonus, too.

With seven different models, from rotator-controllers for light-duty TV antennas to large HF

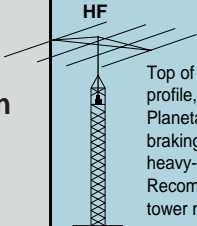
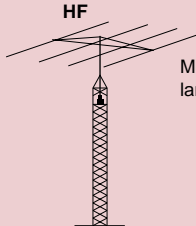
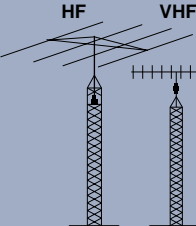


Weather-proof exterior cable boot hook-up on all rotators (except G-250) protects electrical connections.

## FEATURES:

- ¥ 450° tuning radius on most models
- ¥ User selectable North or South center
- ¥ Quiet, gear reduction braking system
- ¥ Quick-disconnect plug for safety during lightning<sup>(1)</sup>
- ¥ 117/220 VAC<sup>(2)</sup>
- ¥ Fits most USA-made tower shelves



Models	G-2800DXA G-2800DXC	G-1000DXA G-1000DXC	G-1000A G-1000C	G-800DXA	G-800SA
<b>Recommended Application</b>	 <p>Top of the line, low profile, high torque. Planetary gears improve braking for large arrays; heavy-duty applications. Recommended for in-tower mounting.</p>	 <p>Medium/heavy-duty for large HF arrays.</p>		 <p>Medium-duty, for medium/large HF/VHF arrays. Includes variable speed and preset controls.</p>	
Wind Load	3 m <sup>2</sup>	2.2 m <sup>2</sup>	2.2 m <sup>2</sup>	2 m <sup>2</sup>	2 m <sup>2</sup>
K-Factor <sup>(4)</sup>	950	230	230	180	180
Stationary Torque	25,000kg/cm	6,000kg/cm	6,000kg/cm	4,000kg/cm	4,000kg/cm
Rotation Torque	2,500~800kg/cm	1,100~600kg/cm	800kg/cm	1,100~600kg/cm	800kg/cm
Max. Vert. Load	300kg	200kg	200kg	200kg	200kg
Max. Vert. Intermittent Load	1,200kg	800kg	800kg	800kg	800kg
Backlash	0.2°	1°	1°	1°	1°
Mast Size	48~63 Ø	38~63 Ø	38~63 Ø	38~63 Ø	38~63 Ø
360° Rotation Time	50~120sec.	40~100sec.	55sec.	40~100sec.	55sec.
180° Elevation Time	N/A	N/A	N/A	N/A	N/A
Boom Diameter	N/A	N/A	N/A	N/A	N/A
Rotator Diameter x Hight	200 Ø x 345	186 Ø x 300	186Ø x 300	186 Ø x 300	186 Ø x 300
Weight	6.5kg	3.5kg	3.5kg	3.5kg	3.4kg
Cable Requirement	6	6	5	6	5

(1) G-2800DXA/DXC, G-1000DXA/DXC/C, G-800DXA, G-650A/C and G-450A/C rotators include this feature.

(5) On models with "DXC/C" suffix, included control

(2) G-2800DXC, G-1000DXC/A/C, G-650A/C, G-450C and G-250 rotators are 220V only.

(3) On models with "DXA/DXC" suffix, rotation speed and torque will vary with the speed control setting.

(4) K-Factor: Multiply turning radius times weight; add K-Factors for each antenna in "Christmas Tree" installations.

# s to turn your head!



arrays, as well as Azimuth-Elevation combinations for satellite applications, there is an impressive combination for virtually every use.

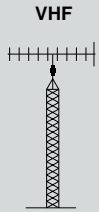
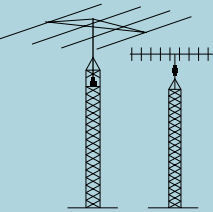
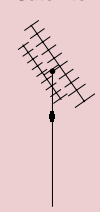
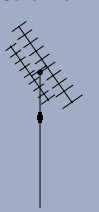
All Yaesu rotators are housed in weatherproof, die-cast aluminum enclosures and permanently lubricated for years of smooth, quiet operation. Unlike other rotators, which use noisy wedge brakes, Yaesu rotators have a quiet, reliable, gear-

reduction braking system. Yaesu rotators are also compatible with most USA-made antenna tower accessory shelves.

Each Yaesu rotator is backed by a one-year warranty, and nearly 40 years of proven communication engineering success. Choose Yaesu rotators for excellence in manufacturing, and performance without compromise.

Quick-connect, 6-prong plug for years of trouble-free operation! <sup>(1)</sup>



G-250	G-450A G-450C	G-650A G-650C	G-5500	G-550
 <p>VHF</p> <p>Light-duty, for small and medium-size UHF, VHF, FM radio and television antenna arrays.</p>	 <p>HF VHF</p> <p>Light to medium duty. Low price, perfect entry level rotator.</p>		 <p>Satellite</p> <p>Azimuth-Elevation Combination for space communication. Includes DIN connection for computer operation.</p>	 <p>Satellite</p> <p>Elevation rotator for satellite communication.</p>
0.2 m <sup>2</sup>	1 m <sup>2</sup>	2 m <sup>2</sup>	1.0 m <sup>2</sup>	1.0 m <sup>2</sup>
20	100	180	60	60
600kg/cm	3,000kg/cm	5,000kg/cm	AZ:4,000kg/cm EL:4,000kg/cm	4,000kg/cm
200kg/cm	600kg/cm	600kg/cm	AZ:600kg/cm EL:1,400kg/cm	1,400kg/cm
50kg	100kg	100kg	30kg	30kg
100kg	300kg	300kg	100kg	100kg
2°	0.5°	0.5°	AZ:1° EL:1°	1°
25~38 Ø	32~63 Ø	32~63 Ø	AZ:38~62 Ø EL:38~62 Ø	38~62 Ø
52sec/50Hz 43sec/60Hz	63sec/50Hzv 51sec/60Hz	63sec/50Hz 51sec/60Hz	AZ:70sec/50Hz 58sec/60Hz	N/A
N/A	N/A	N/A	EL:80sec/50Hz 67sec/60Hz	80sec/50Hz 67sec/60Hz
N/A	N/A	N/A	EL 32~43 Ø	EL 32~43 Ø
142 Ø x 315	170 Ø x 263	186 Ø x 263	186 Ø x 254(W) x 350(H)	254(W) x 190(H)
1.8kg	3.2kg	3.5kg	7.8kg	3.5kg
6	5	5	2 x 6	6

rol cable.

# Optional Accessories



**GC-038** Mast Clamp for  
G-1000DXA/DXC, G-1000A/C, G-800DXA,  
G-800SA, G-650A/C, and G-450A/C Rotators



**GC-048** Mast Clamp for  
G-2800DXA/DXC Rotators



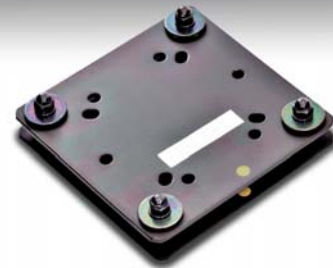
**GS-050** Thrust Bearing



**GS-065** Thrust Bearing



**GS-680U** Universal Bearing



**GA-3000** Absorber Joint for  
G-2800DXA/DXC Rotators



**GA-2500** Absorber Joint for  
G-1000DXA/DXC, G-1000A/C, G-800DXA,  
G-800SA, G-650A/C, and G-450A/C  
Rotators



**GS-232A** Computer Controller for all  
DXA/DXC Series and G-5500 Rotators  
• **C-1000** Control Cable for GS-232A  
(using SDX Series Rotators)



**GL-33** Mast Adjustment Plate

About this brochure: we have made this brochure as comprehensive and factual as possible. We reserve the right, however, to make changes at any time in equipment, optional accessories, specifications, model numbers, and availability. Some accessories shown herein may not be available in some countries. Some information may have been updated since the time of printing; please check with your Authorized Yaesu Dealer for complete details.

**YAESU** VERTEX STANDARD CO., LTD.  
4-8-8 Nakameguro, Meguro-ku, Tokyo 153-8644, Japan

For the latest Yaesu news, visit us on the Internet:  
<http://www.vxstd.com>

VERTEX STANDARD <http://www.vxstdusa.com>

**US Headquarters**  
10900 Walker Street, Cypress, CA 90630, U.S.A.

YAESU EUROPE B.V.

P.O. Box 75525, 1118 ZN Schiphol, The Netherlands

YAESU UK LTD. <http://www.yaesu.co.uk>  
Email: [sales@yaesu.co.uk](mailto:sales@yaesu.co.uk)

Unit 12, Sun Valley Business Park, Winnall Close  
Winchester, Hampshire, SO23 0LB, U.K.

VERTEX STANDARD HK LTD. <http://www.vxstd.com.hk>

Unit 5, 20/F., Seaview Centre, 139-141 Hoi Bun Road,  
Kwun Tong, Kowloon, Hong Kong